

**Community Development Department**  
Prosser Office: 620 Market Street, 1<sup>st</sup> Floor  
Kennewick Office: 102206 East Wiser Parkway  
[www.bentoncountywa.gov](http://www.bentoncountywa.gov)



**Planning Division**  
(509) 786-5612  
[Planning.department@co.benton.wa.us](mailto:Planning.department@co.benton.wa.us)  
102206 East Wiser Parkway, Kennewick, WA 99338

## NOTICE OF PUBLIC HEARING

NOTICE OF HEARING BEFORE THE BENTON COUNTY PLANNING COMMISSION in the matter of county planning at a regular meeting on April 9, 2024, at 6:00 p.m., via in person and virtual meeting format in the Meeting Room on the first floor of the Courthouse, 620 Market Street, Prosser WA. The entry to the meeting room is located off Main Street on the East side of the Courthouse. To find information on virtual attendance options, including streaming video, WebEx video conferencing and telephone, please visit [www.tinyurl.com/BCPublicNotice](http://www.tinyurl.com/BCPublicNotice).

NOTICE IS HEREBY GIVEN that public comment will be taken on the following proposed amendments to the Benton County Comprehensive Plan before the Benton County Planning Commission at this meeting:

**CPA 2024-001** - A proposal by Benton County to amend two (2) sections of the Benton County Comprehensive Plan related to the Open Space Conservation Land Use Designation. The application proposes to amend Section 3.3.5 table 3.4.

**CPA 2024-002** - A proposal by Spink Engineering on behalf of the City of Benton City to amend the land use designation of two (2) parcels in the Benton County Comprehensive Plan. The application proposes to amend the current land use designation of Rural Industrial for both parcels to a land use designation of Public for parcel 1-1396-401-1991-002 and a designation of Rural Remote for parcel 1-1394-401-1991-001.

NOTICE IS FURTHER GIVEN that the proposed Comprehensive Plan Amendments have been reviewed under the requirements of the State Environmental Policy Act and Determinations of Non-Significance (DNS) were issued on February 21, 2024. Accordingly, Environmental Impact Statements were not required for these proposals. Any comments regarding these determinations and the environmental impacts of the proposals can be made at the Planning Commission Hearing or in writing to the Benton County Planning Division by 3 p.m. on Monday, April 8, 2024.

At this hearing, the Planning Commission may recommend approval or disapproval of the amendments to the Benton County Board of Commissioners. All parties concerned may present any support or objections for the applications. Information concerning the applications can be obtained at the Benton County Planning Division, by calling 736-3089 (Tri-Cities) or 786-5612 (Prosser) or by visiting [www.tinyurl.com/BCPublicNotice](http://www.tinyurl.com/BCPublicNotice).

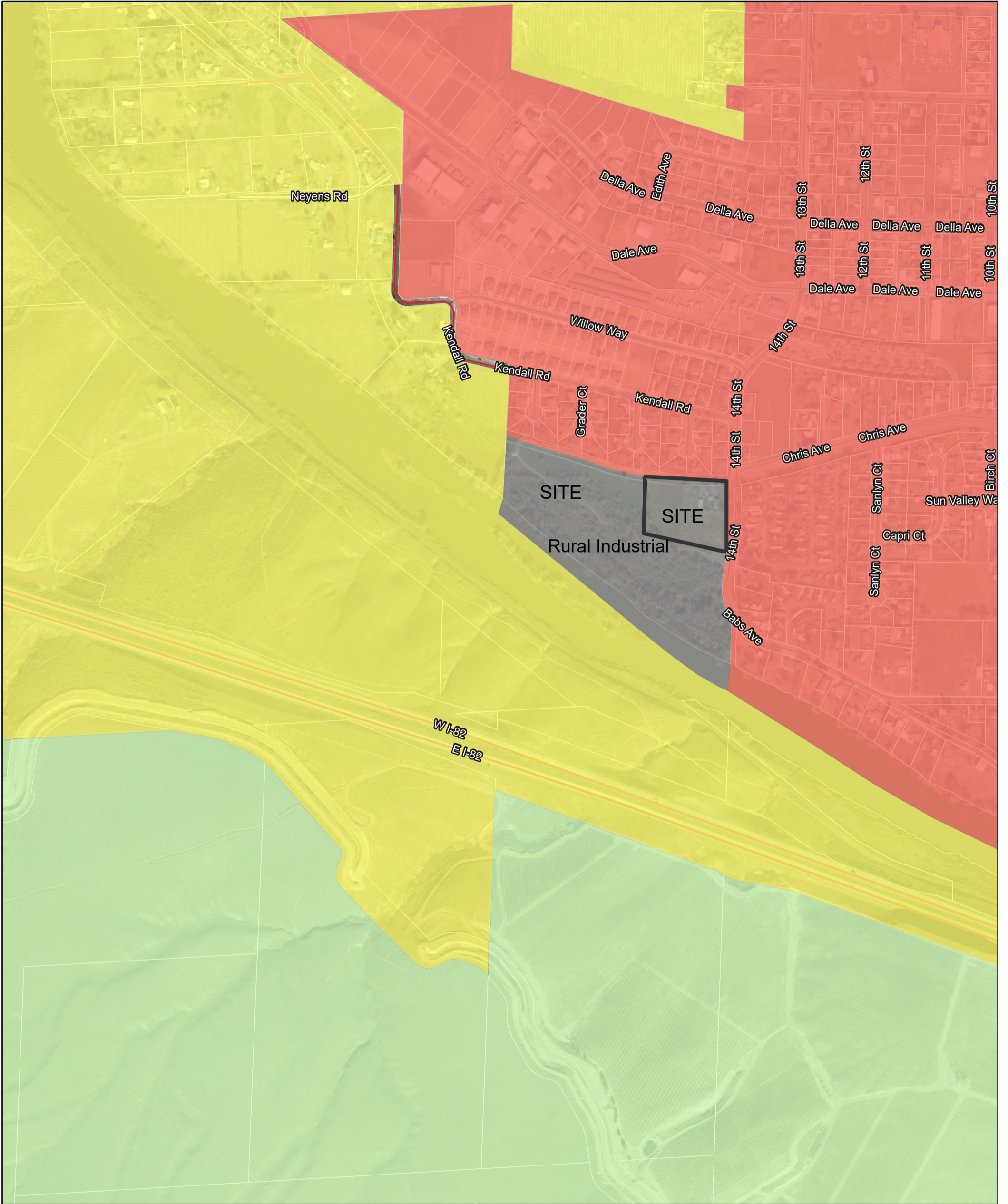
Dated this 20<sup>th</sup> day of March 2024.

Martin Sheeran, Chairman  
Benton County Planning Commission

Michelle Mercer, Manager  
Planning Division

PUBLISH: March 27, 2024

# CPA 2024-002 Current Comp Plan Designations



3/21/2024, 1:55:00 PM

CompPlan

GMA AG

RURAL INDUSTRIAL

RURAL REMOTE

URBAN

Access Easement

Road Centerline

Paved County Road

Gravel County Road

Private County Road

Interstate

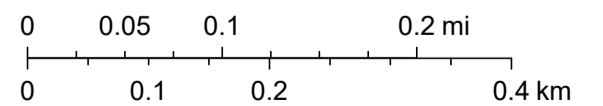
City Road

Parcels

City Limits

Benton City

1:9,028



Geophex Surveys Ltd., Maxar

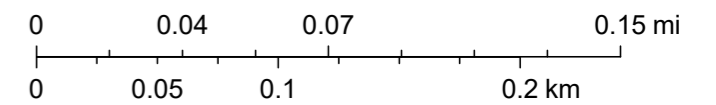
# CPA 2024-002/EA 2024-002 Proposed Comp. Plan Designations



2/20/2024, 3:15:47 PM

1:4,514

- Road Centerline — Interstate  Parcels
- Paved County Road  City Road City Limits
- State Route  Benton City



Geophex Surveys Ltd., Maxar